



Early Learning Update

Dianne Haulcy | Assistant Commissioner of Early Childhood

March 4, 2025

- DCYF Transition Update
- Program Updates
 - Voluntary Prekindergarten (VPK)
 - School Readiness (SR)
 - Early Childhood Family Education (ECFE)
 - Part C Early Intervention
 - Health and Developmental Screening
 - Grants

Department of Children, Youth, and Families

Agency Vision

A Minnesota where all children, youth and families are valued, treated equitably and thriving.

One Minnesota Vision

To make Minnesota the best state in the country for children to grow up in – those of all races, ethnicities, religions, economic statuses, gender identities, sexual orientations, (dis)abilities, and zip codes.



Principles:

- Whole family focus
- Focus on a child throughout their life, from intentional prevention to downstream services
- Services are easy to access and navigate (“front door”)
- Increase connections across state programs and services
- Improved outcomes achieved for all children and families regardless of geography, economic status, and race

Who do we serve each month?



12,360
Voluntary
Prekindergarten



13,747
Child Care
Assistance
Program



10,553
Early Learning
Scholarship
recipients



19,132
Families served in
Northstar for
Children



440,490
People receive
food assistance
through SNAP



500,000
Parents &
children receive
child support
services



Programs Transferred or to be Transferred to DCYF

Children and Family Services at the Department of Human Services:

- Management Operations and Business Integration
- Child Care Services
- Child Safety and Permanency
- Child Support
- Economic Assistance and Employment Supports Division
- Office of Economic Opportunity

Office of Inspector General & Department of Human Services Operations:

- Licensing functions for family child care, child care centers, certified child care centers, and child family foster care settings.
- Program integrity units for related Children and Family Services (CFS) programs
- DHS Central Operations functions - Human Resources, Finance, General Counsel, Compliance, and Management Services, etc.

Programs from Office of Teaching and Learning at the Department of Education:

- Early Learning Services Division (except Part B 619)
- After-School Community Learning Grant (will transfer if additional funding is appropriated)

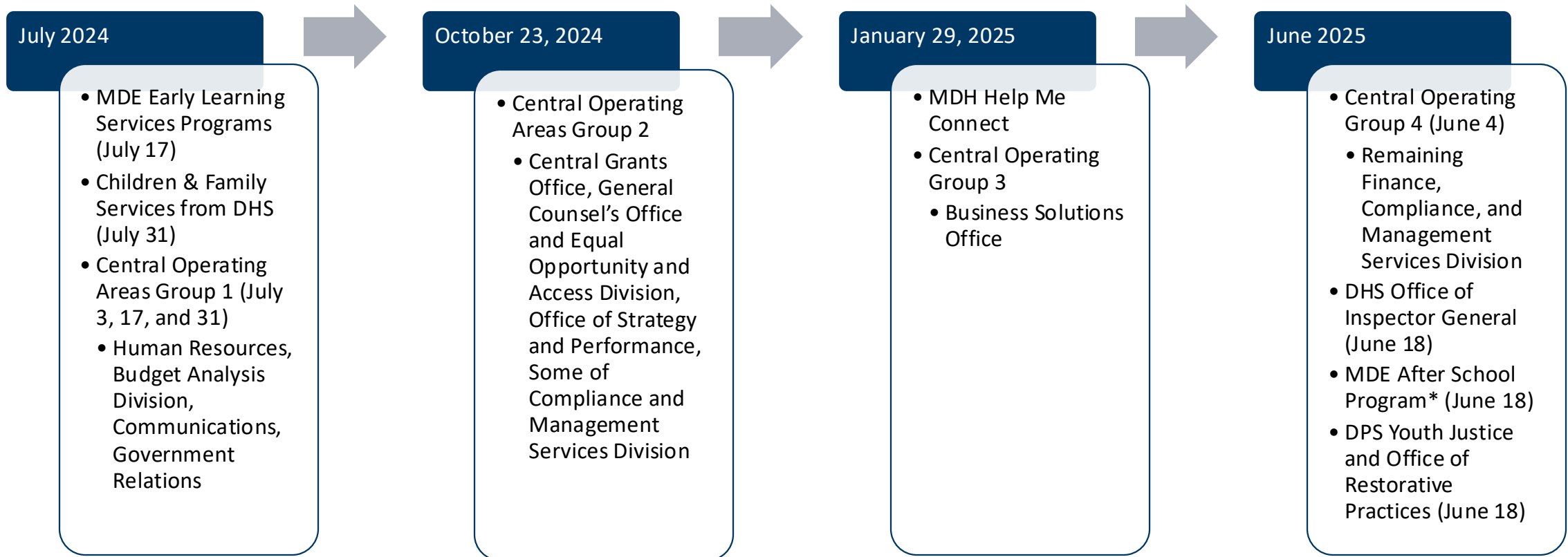
Programs from Department of Public Safety

- Juvenile Justice Advisory Committee
- Youth Intervention Program Grant
- Youth Justice Office
- Office of Restorative Practices

Program from Child and Family Health Division at Minnesota Department of Health

- Help Me Connect

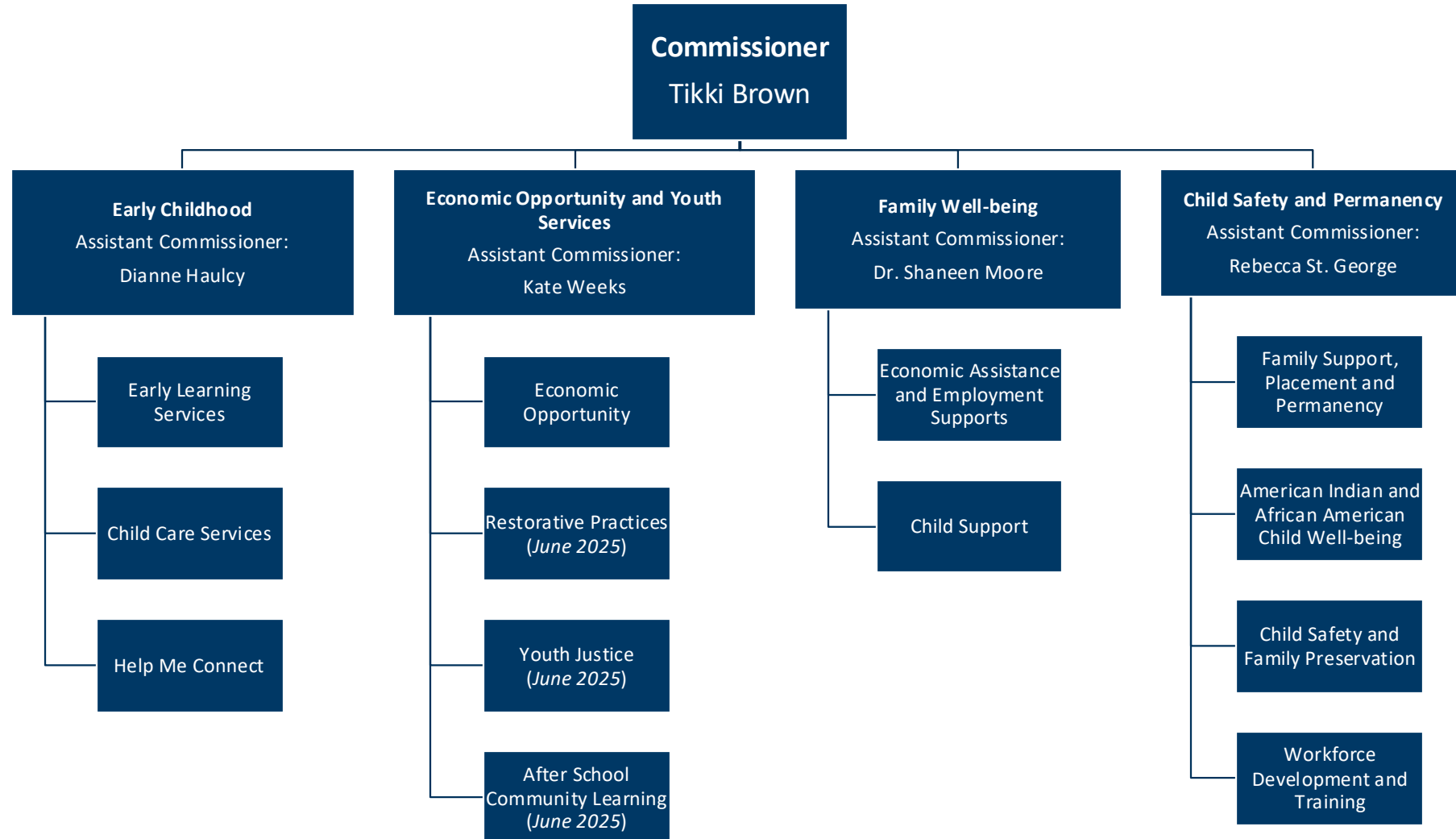
Planned DCYF Transfer Timeline



Planned program transfers may be delayed or cancelled to prevent service disruptions, ensure adequate infrastructure is in place for program success, or to accommodate federal approval timelines

**The After-School Community Learning Grant Program is planned to transfer if additional funding is appropriated*

DCYF Administrations



Early Learning Program Jurisdiction

Education Finance Committee		Health & Human Services Committee
Appropriations to MDE	Appropriations to DCYF	Appropriations to DCYF
<ul style="list-style-type: none"> • Voluntary Prekindergarten (VPK) • Early childhood special education • Early Childhood Family Education (ECFE) at tribal schools • Early childhood and family education teacher shortage grants (transfer to OHE) • Kindergarten entrance assessment 	<ul style="list-style-type: none"> • Developmental screening aid & administrative costs • Early Childhood Family Education (ECFE), including: <ul style="list-style-type: none"> • ECFE revenue (aid & levy) • ECFE home visiting revenue (aid & levy) • ECFE support staff • School readiness • VPK administrative costs 	<ul style="list-style-type: none"> • Early childhood literacy • Educate parents partnership • ParentChild+ • Early learning scholarships • Quality Rating & Improvement System (QRIS) • Head Start • Reach Out & Read • Grow Your Own (GYO) Early Educators

Early Learning Programs

Senate Education Finance Jurisdiction

Voluntary Prekindergarten (VPK)

Program Purpose: *To support children and their families so they are successful learners as they transition to kindergarten and beyond.*

Funding must be used to serve 4 years olds who meet at least one criteria identified in law.

Fiscal Year 2025 Data

- 12,360 seats distributed across state via allocation process
- Maximum average daily membership (ADM) is 0.6 per student (60% of a full day of school)
- 368 sites in 208 school districts and charter schools
- Estimated at \$67M, excluding special education and nutrition

Other Highlights

- Alignment of school-based programming for 4-year-olds beginning in FY2026
- Teacher licensing requirement effective in 2028
- Reduced administrative burden for schools with move from annual application process to every 4 years

Program Purpose: *To prepare children to enter kindergarten.*

Funding must be used to serve children who are at least 3 years old on September 1, have completed health and developmental screening within 90 days of program enrollment, and have a risk factor identified in law.

Fiscal Year 2024 Data

- 327 school districts
- 199 districts received less than \$50,000 in School Readiness funding
- \$33.7M capped annual appropriation

Early Childhood Family Education (ECFE)

Program Purpose: *To provide parenting education to support children's learning and development.*

Funding may be used to support all children birth to kindergarten and their parents/caregivers.

Schools design programming and services to meet the needs and wants of families in their community and must conduct an annual community needs assessment. Key components of an ECFE class include:

- a learning activity for children,
- parent-child interaction time that is led by a Licensed Early Childhood teacher, and
- Parent/Caregiver discussion lead by a Licensed Parent Educator.

Fiscal Year 2024 Data

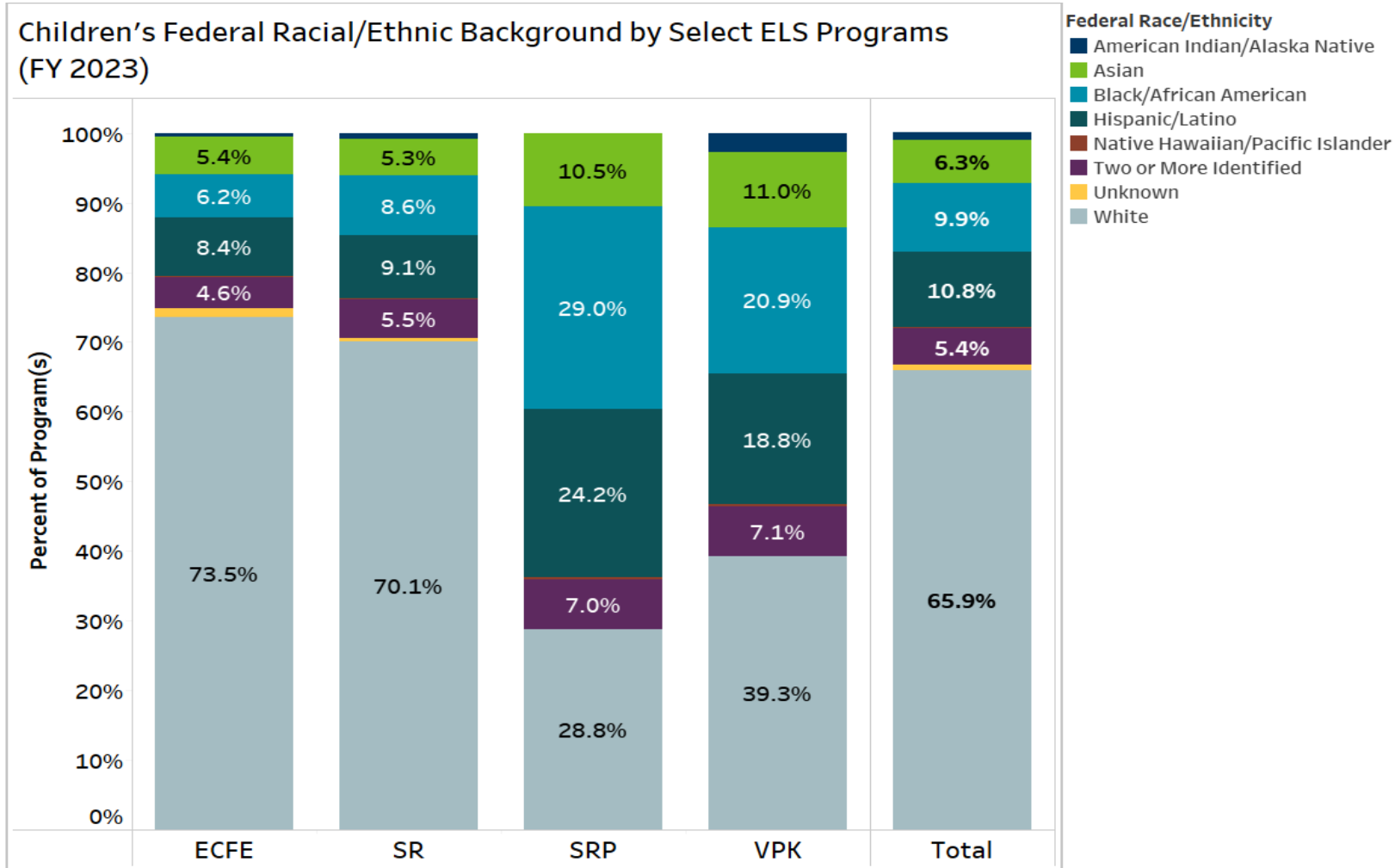
- 324 of 327 school districts have ECFE programs
- Two new ECFE program specialists hired with dedicated funding from 2023 Legislature
- Estimated \$82M for 26-27 biennium (including ECFE Home Visiting Aid)

Early Learning Program Participation

Program	FY 2022	FY 2023
Early Childhood Family Education (ECFE)	9,928	15,138
School Readiness (SR)	12,920	20,486
School Readiness Plus (SRP)	711	541
Voluntary Pre-Kindergarten (VPK)	7,170	7,054
Total (Unduplicated Count Across Programs)	28,731	40,197

Number of children served in Early Learning programs in FY22 and FY23.

Early Learning Program Participation (2)



Part C Early Intervention

Program Purpose: To enhance the development of infants and toddlers with disabilities, to minimize their potential for developmental delays and to recognize the significant brain development that occurs during the child's first three years and to enhance capacity of families to meet the special needs of their infants and toddlers with disabilities.

Part C of the IDEA is a federal grant program that supports states to operate comprehensive early intervention services for infants and toddlers with disabilities and their families. There are several federal program requirements that the state is required to meet which are included in state law or met through state program guidance.

Part C in Minnesota

Minnesota is a **Co-Lead, Birth Mandate** state

- Minnesota Department of Education (MDE) and Department of Children, Youth, and Families (DCYF) co-lead through an Interagency Agreement
- Part C services happen through *Free and Appropriate Public Education (FAPE)* – through the school districts/cooperatives
- There is no cost to families

Minnesota is a *local control* state

Part C is created to be *whole family, whole systems*

Part C in Minnesota (2)

Education

- Applied for and received federal funding for FFY2025.
- Submitting SPP/APR/SSIP in February 2025
- Monitoring, Compliance, Dispute Resolution
- Professional Development and Technical Assistance
- Allocating and monitoring funds designated to LEAs/SEAUs

Children, Youth & Families

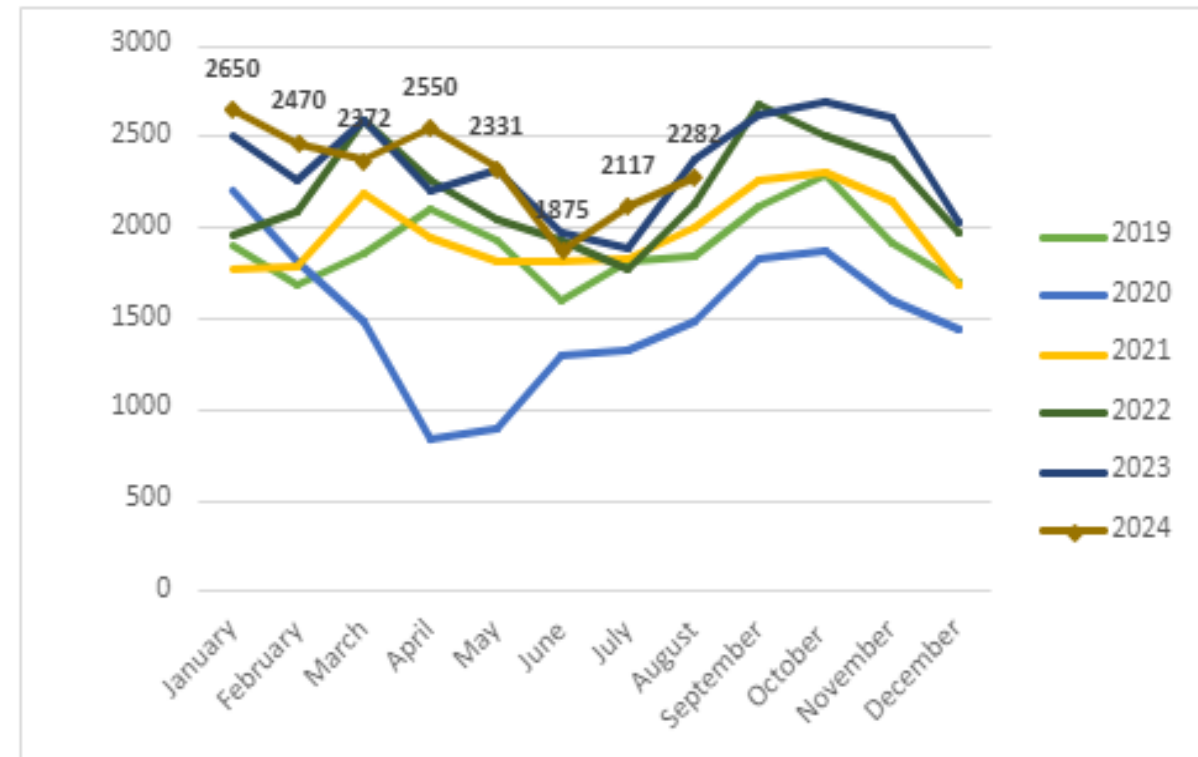
- Designated supervision and coordination of Part C
- Help Me Grow Minnesota and website
- Interagency Early Intervention Committees (IEICs)
- Governor's Interagency Coordinating Council (ICC)
- Interagency Agreements and Service Coordination support

Part C Data

Cumulative Child Count

Race/ Ethnicity	2020	2021	2022	2023
Hisp/Lat	1,149	1,009	1,201	1,389
AI/AN	240	176	199	201
Asian	645	521	555	589
BLK/AA	1,153	966	1,189	1,328
NH/PI	8	8	9	11
White	1,336	6,726	7,607	8,148
2 or More	623	524	570	682
Total	11,154	9,930	11,330	12,348

Help Me Grow Referrals



Health and Developmental Screening

Program Purpose: *To identify possible health and/or developmental concerns in young children (target age of 3 to 4 years old) and support linking families to free/low-cost early learning opportunities, community resources, etc.*

Includes health review **and** learning and development review.

Schools are reimbursed a fixed amount of health and developmental screen aid per child screened.

Age	3 years old	4 years old	5-6 prior to K	30 days into K
Reimbursement	\$98	\$65	\$52	\$39

Other Highlights

- Also known as Early Childhood Screening
- For FY23, school districts completed 58,374 screenings and the aid provided to districts for those screenings totaled \$3,309,530
- Per pupil reimbursement rates increased 30% by 2023 Legislature, but districts still often operate program in a budget deficit
- Estimated at \$8.15M for the 26-27 biennium

Early Childhood Teacher Shortage

- Also known as Early Childhood Curriculum Grants
- \$500,000 annually transferred to Office of Higher Education for administration
- For institutes of higher education to align curriculum with Minnesota's Early Childhood Knowledge and Competency Framework

Preschool Development Grant

- Purpose: to align education and care systems across the state
- \$24M *federal* grant available from 2024-2027
- Mixed delivery data analytics and supports
- Early childhood coaching for schools
- Grow Your Own and Child Development Associate (CDA) credentials in high schools pilot

Thank You!